

YEAR 2008

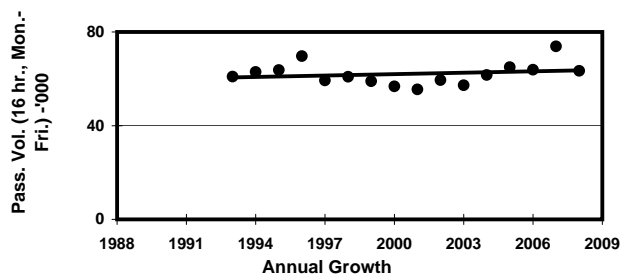
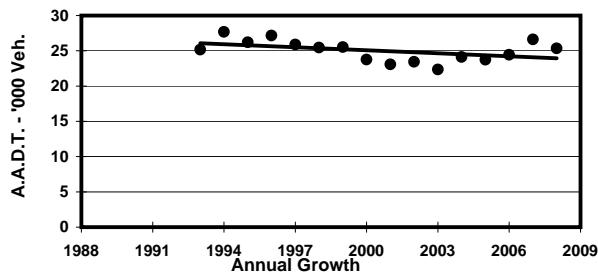
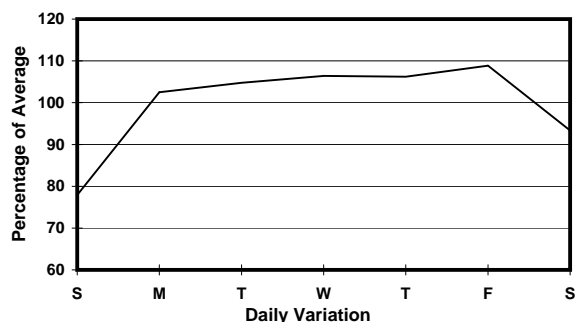
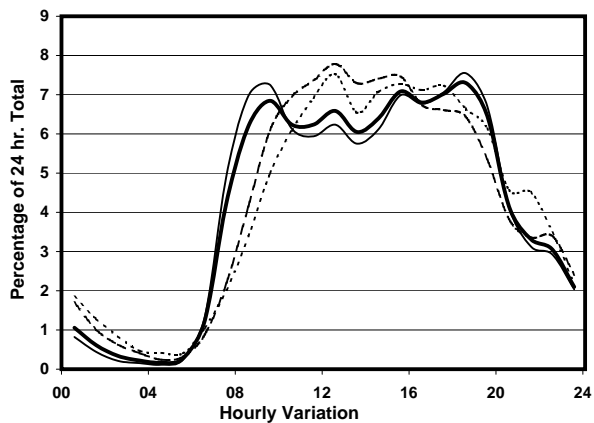
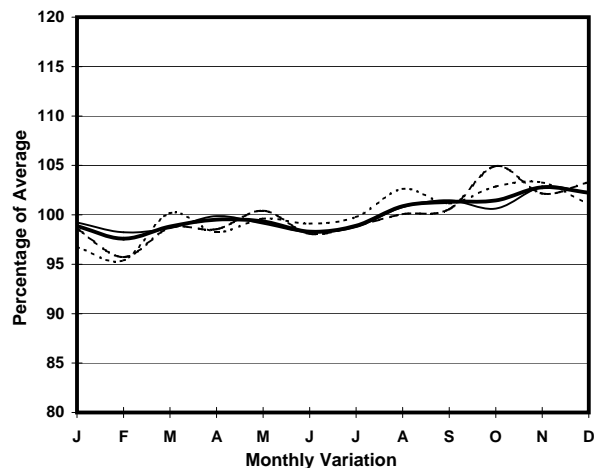
Location

Screenline H-H(Boundary Between the Peak and the rest of Hong Kong Island)

Stations on Cordon/Screenline

2203 and 2205

1. TRAFFIC FLOW VARIATION AND GROWTH



— All day — Mon.- Fri. - - - Sat. - - - - Sun.

2. TRAFFIC CHARACTERISTICS (BY DIRECTION)

Parameter	All - Day	Mon. - Fri.	Sat.	Sun.
UP BOUND				
A.A.D.T.	12520	13390	11620	10180
R 12 / 24 - %	75.3	75.9	74.9	72
R 16 / 24 - %	93.4	94	91.7	90.9
AM Peak Hour	0900-1000	0900-1000	0900-1000	0900-1000
One-way flow at AM peak hour	840	950	700	510
T - % (AM)	-	5	-	-
PM Peak Hour	1800-1900	1800-1900	1600-1700	1700-1800
One-way flow at PM peak hour	940	1060	800	740
T - % (PM)	-	5.4	-	-
Prop.of commercial vehicles - 16 hr.	-	4.9	-	-
DOWN BOUND				
A.A.D.T.	12820	13740	12350	9780
R 12 / 24 - %	78.7	79.6	78	73.6
R 16 / 24 - %	94.6	95.2	93.1	92.2
AM Peak Hour	0900-1000	0900-1000	0900-1000	0900-1000
One-way flow at AM peak hour	900	1020	760	480
T - % (AM)	-	1.9	-	-
PM Peak Hour	1700-1800	1700-1800	1600-1700	1800-1900
One-way flow at PM peak hour	930	1020	810	710
T - % (PM)	-	5.3	-	-
Prop.of commercial vehicles - 16 hr.	-	5.6	-	-

3. OTHER INFORMATION AND COMMENT

4. Vehicle classification and occupancy - Monday to Friday

Time		Class of vehicle									
		Motor	Private	Taxi	Private	PLB	Goods veh.		Non	Fr. Bus	
		Cycle	Car		LB		Light	M & H	Fr. Bus	SD	DD
0700-0800	Pro	2.2	50.4	31.2	2.8	4.4	3.1	0.5	5.2	0.0	0.3
	Ocp	1.0	1.6	1.9	3.5	13.8	3.8	1.0	9.0	0.0	24.2
0800-0900	Pro	0.8	62.2	24.0	1.7	1.7	4.2	0.8	4.3	0.0	0.3
	Ocp	1.0	1.5	2.2	5.5	14.7	1.7	1.3	9.4	0.0	34.3
0900-1000	Pro	1.6	60.1	23.9	1.0	1.7	8.4	1.0	2.0	0.0	0.3
	Ocp	1.2	1.5	1.8	6.0	12.1	2.1	1.8	9.9	0.0	28.9
1000-1100	Pro	0.9	49.6	28.1	1.7	0.7	13.9	0.7	4.0	0.0	0.4
	Ocp	1.0	1.6	1.7	2.9	14.3	1.7	1.0	7.2	0.0	15.0
1100-1200	Pro	2.0	52.3	25.0	1.8	1.1	12.8	1.4	3.1	0.0	0.6
	Ocp	1.0	1.7	1.9	2.7	14.2	1.8	1.3	11.1	0.0	16.4
1200-1300	Pro	1.9	53.7	24.4	1.1	1.3	12.8	1.3	3.0	0.0	0.5
	Ocp	1.0	1.5	1.9	4.6	12.0	1.6	1.6	21.6	0.0	17.3
1300-1400	Pro	1.5	47.7	28.3	0.5	1.4	13.0	1.7	5.5	0.0	0.6
	Ocp	1.0	1.5	1.8	4.0	11.6	1.8	1.6	17.8	0.0	22.5
1400-1500	Pro	0.6	50.2	32.4	1.2	1.3	9.5	1.1	3.2	0.0	0.5
	Ocp	1.0	1.4	1.7	2.8	8.2	1.8	1.7	6.5	0.0	31.7
1500-1600	Pro	1.6	53.3	28.6	1.3	1.3	8.2	1.5	3.8	0.0	0.3
	Ocp	1.2	1.6	2.1	4.3	12.0	1.7	1.1	9.4	0.0	31.1
1600-1700	Pro	1.5	55.1	29.1	1.8	1.6	7.7	0.6	2.4	0.0	0.4
	Ocp	1.2	1.7	1.9	4.1	7.4	1.8	1.5	13.1	0.0	42.6
1700-1800	Pro	2.2	57.2	26.9	0.4	2.4	5.8	0.2	4.6	0.0	0.4
	Ocp	1.0	1.5	2.3	1.6	10.8	2.2	2.0	17.7	0.0	38.3
1800-1900	Pro	1.4	57.0	33.1	0.1	1.6	1.7	0.0	4.7	0.0	0.3
	Ocp	1.0	1.6	2.0	4.0	14.4	1.6	0.0	19.4	0.0	53.1
1900-2000	Pro	3.0	60.8	27.0	0.0	1.4	1.4	0.0	6.0	0.0	0.4
	Ocp	1.1	1.6	1.9	0.0	16.0	1.6	0.0	15.5	0.0	35.7
2000-2100	Pro	3.0	64.9	25.6	0.0	1.0	0.7	0.7	3.4	0.0	0.8
	Ocp	1.2	1.4	2.1	0.0	8.0	2.0	1.0	19.6	0.0	19.6
2100-2200	Pro	0.9	48.1	39.2	0.0	1.3	1.2	0.0	8.3	0.0	0.9
	Ocp	1.5	1.6	1.9	0.0	10.7	1.7	0.0	9.6	0.0	18.3
2200-2300	Pro	1.0	61.8	29.2	0.5	2.9	0.5	0.0	3.1	0.0	0.9
	Ocp	1.5	1.6	1.9	3.0	8.5	3.0	0.0	14.7	0.0	17.0
16 hours	Pro	1.6	55.3	28.1	1.0	1.7	7.0	0.8	4.1	0.0	0.4
	Ocp	1.1	1.6	1.9	3.9	12.1	1.8	1.4	13.4	0.0	27.0

Legend

- Pro.** Proportion of vehicles in % (Sum may not add up to 100% due to figure rounding)
- Ocp.** Average occupancy of vehicles
- M & H** Medium and Heavy